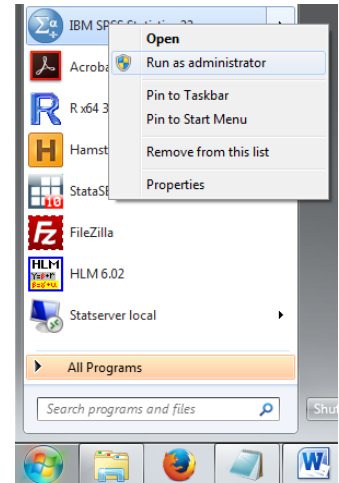


Installing the PROCESS Custom Dialog in SPSS

The custom dialog version of PROCESS allows you to use most of the features of PROCESS without writing syntax. In order to run PROCESS using the point-and-click interface familiar to SPSS users, you must install the custom dialog file that comes with PROCESS.

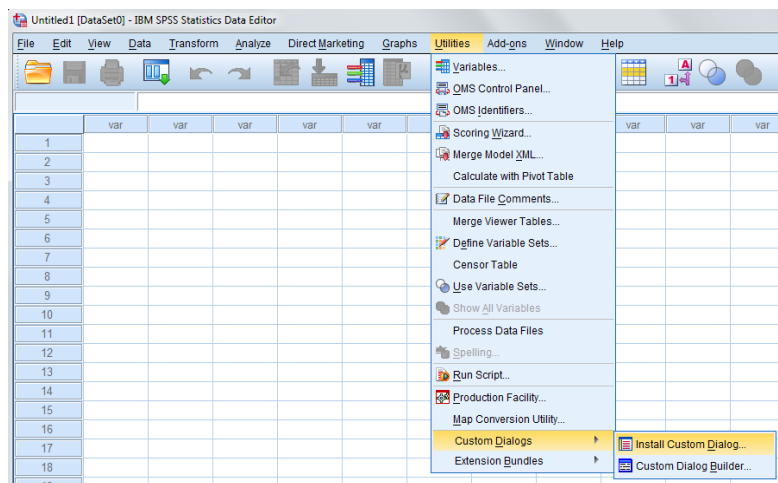
There are three ways to install the PROCESS custom dialog file in SPSS. The procedure you need to use depends on the version of SPSS you have. All of these procedures may require that you are running SPSS as an administrator, depending on your settings. If you are not the administrator of your machine or are not running SPSS as an administrator, you may receive an error telling you that the dialog could not be installed.

To run SPSS as an administrator (Windows only), right click on the SPSS Statistics icon and select the “Run as administrator” option, as to the right. If you find that none of the procedures below work and you are sure you are running as an administrator, contact your local IT expert for guidance.



SPSS version 23 and earlier

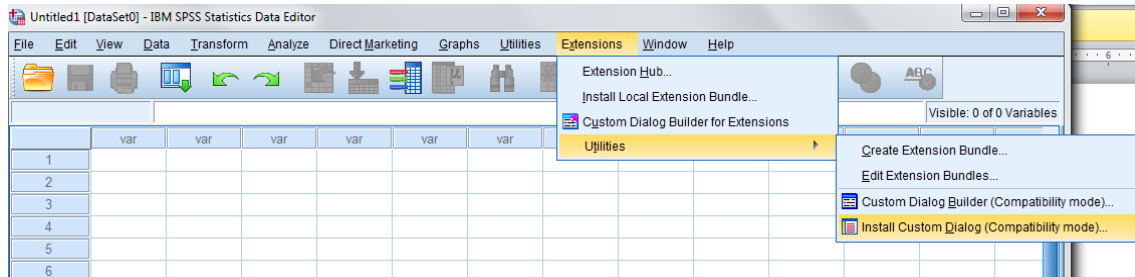
In version 23 and earlier, you may be able to install the custom dialog merely by clicking on the PROCESS dialog builder file on the desktop in the location where you have stored PROCESS. If this does not work, you can instead install it from within SPSS. After opening SPSS, under the “Utilities” menu, choose “Custom Dialogs” and then “Install Custom Dialog,” as below. Then locate the PROCESS dialog builder file and click “Open.”



Once the dialog is installed, you will find it in SPSS nested under “Analyze→Regression”

SPSS version 24 and later

The procedure for installing a custom dialog in SPSS 24 and later is almost identical to the procedure in earlier versions. Two things have changed. First, you cannot install a custom dialog file in SPSS merely by double clicking on it on the desktop. Second, as of version 24, SPSS has changed the location in the menus where the dialog installer is located. You will find it in SPSS under the “Extensions” menu. In the Extensions menu, choose “Utilities” and then “Install Custom Dialog”, as below.



In the window that opens, locate the PROCESS dialog builder file and click “Open.”

Note that not all features available in the PROCESS macro are available in the custom dialog. For example, there is no option in the dialog for saving the bootstrap estimates, seeding the random number generator, or specifying a specific value of a moderator when conditioning effects.

The PASTE button on the PROCESS dialog window not write a PROCESS command for you in a syntax window. Do not use the PASTE button. If you would like to use PROCESS in your syntax, you must execute the syntax file containing the PROCESS code before executing a PROCESS command, as discussed in Appendix A of <http://www.guilford.com/p/hayes3>. Installing the dialog box does not eliminate the need to run process.sps if you are planning on using PROCESS syntax in your SPSS programs.